

# LINEAR



LANGUAGE OF LINEAR FORMS.

TRENDY AND TIMELESS

CE

EN 14351-1:2006+A2:2016

 window tech

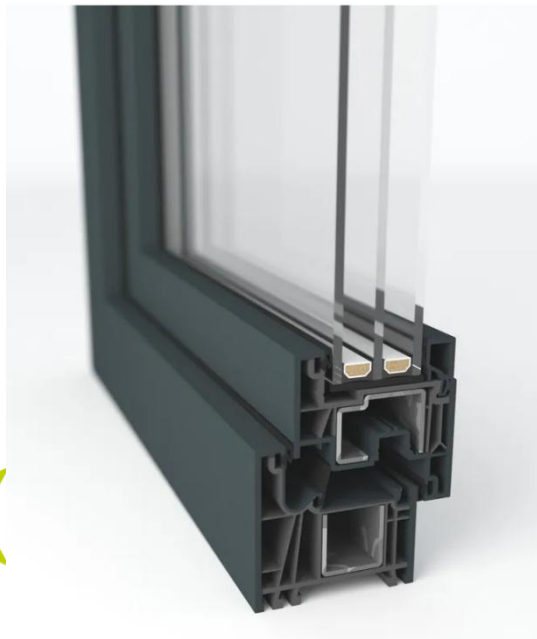
## Are you thinking about new windows?

Whether it's a new construction or a renovation, LINEAR® amazes with its extreme versatility.

The 74 mm construction depth is suitable for a variety of construction projects, including renovations, modernizations, and new builds.

LINEAR® also meets the highest requirements for thermal insulation and stability, and thanks to its recycled core, it is particularly environmentally friendly.

Eco-sustainable thanks to the recycled core.



The GEALAN-LINEAR® system offers excellent thermal insulation properties despite a construction depth of 74 mm. The six chambers in the frame and the five chambers in the sash support excellent thermal insulation. The innovative central seal prevents heat flow from the inside to the outside.

### Design CONVINCING AESTHETICS

The system is oriented towards a systematically linear language of forms, such as that currently most widespread in architecture.

The thin visible parts in the frame and sash ensure more light in buildings.

A range of dedicated glazing beads continues the bold design of the external exposed surfaces on the inside of the windows.

### Thermal and acoustic insulation

Excellent thermal and acoustic insulation thanks to the 6-chamber structure, 74 mm depth and central seal.

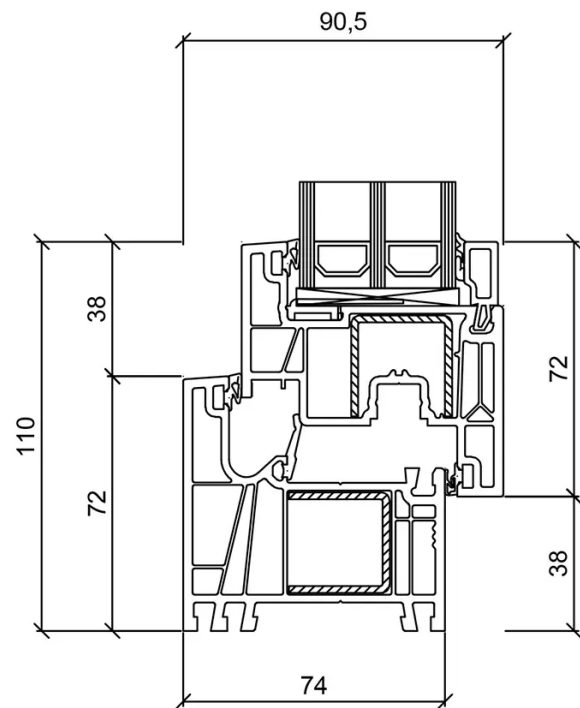
## Efficient use of material

The intelligent geometry of the PVC profiles optimizes the use of materials, conserving resources and therefore protecting the environment.

Large main chamber for large steel stiffening elements, with only one stiffening steel required for frames and sashes.

## REAL DECORATIVE FILM

For everybody appreciating a natural appearance without compromising on the advantages of state-of-the-art window technology, there are plastic windows in wooden décor look.



## Advantages

- Thermal and acoustic insulation
- Large chambers for large steel reinforcements
- High level of security thanks to multiple perimeters locking
- Stable steel reinforcements provide high resistance to bending and allow the creation of large windows
- Simplified accessibility for people with special needs and children
- Possibility of using hidden hinges
- Use of double or triple glazing
- Wide range of typologies and solutions
- Wide range of Acrylcolor and wood imitation
- Modern design
- Ideal solution for homes and buildings
- Window type: Casement
- Thermal insulation: Yes
- External shape: Flat



## Technical Characteristics

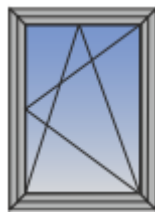
## Performance

<b>FRAME DEPTH:</b>	74.0 mm	<b>RESISTANCE TO WIND LOAD (UNI EN 12210)</b>	Clase C3
<b>SASH DEPTH:</b>	74.0 mm	<b>WATER TIGHTNESS (UNI EN 12208)</b>	Classe 4A
<b>FRAME HEIGHT:</b>	72.00 mm	<b>AIR PERMEABILITY (UNI EN 12207)</b>	Classe 4
<b>MIN. WIDTH CENTRAL: COLUMN</b>	170.00 mm	<b>THERMAL TRASMITTANCE <math>U_f</math> W/(m<sup>2</sup>K)</b>	1.4
<b>SASH WEIGHT:</b>	up to 150 Kg	<b>THERMAL TRASMITTANCE <math>U_w</math> (UNI EN ISO 10077-1)</b>	0.98
<b>GLAZING TYPE:</b>	Double/ Triple	<b>BURGLARY RESISTANCE:</b>	RC2/RC 2N
<b>GLAZING THICKNESS:</b>	28 - 52 mm		
<b>REINFORCMENTS:</b>	Steel		
<b>MAXIMUM SASH HEIGHT:</b>	2500 mm		

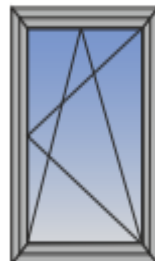
### TYOLOGIES



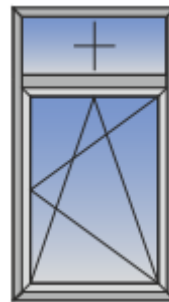
Fixed



One sash tilt and turn



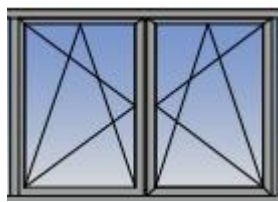
One sash tilt & turn low threshold



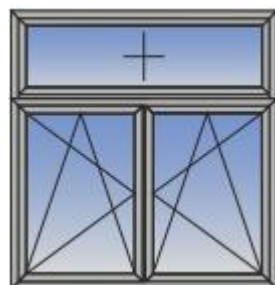
Single tilt & turn with fixed light



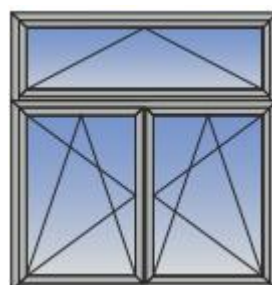
Single tilt & turn with fanlight



Double tilt and turn



Double tilt and turn with fixed light



Double tilt and turn with fanlight



Double tilt and turn