

# S 560



The smartest solution for Lift & Slide or regular sliding windows and patio doors.



EN 14351-1:2006+A2:2016



S560 presents the ideal solution for robust constructions, offering high functionality and top performance.

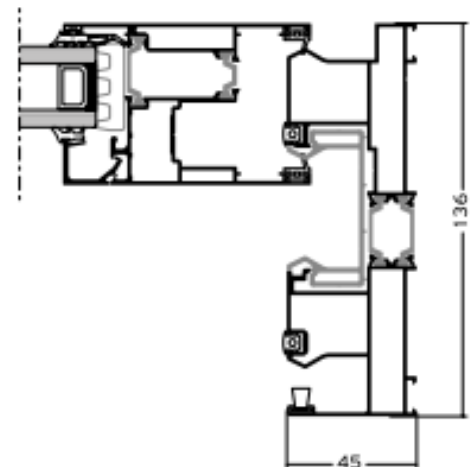
Thermally insulated profiles with glass-reinforced polyamides PA 6.6 incorporated in both the frame and the sash with a 24 mm and 16 mm width

The unique PVC profiles contribute to excellent thermal insulation, water tightness, and UV protection. This ensures remarkable durability and texture retention even under intense exposure to solar radiation.

The system ensures an exceptionally noiseless and flawless operation of the sashes, effortlessly accommodating large and heavy constructions through the use of inox rails.

Ideal for heavy-duty constructions up to 300 Kg per sash cooperating with the Lift & Slide mechanism which offers:

- Outstandingly smooth and quiet movement of the sliding sashes.
- Effortless instead of easy operation even of large and heavy sashes
- Enhanced safety with the cooperation of a silent close accessory, ensuring soft and secure closure of the sashes.



### Features & Benefits

- High quality with certified performance
- Maximum natural light, with only 49 mm of visible aluminium face width at the interlocking profile
- High level of safety thanks to multiple locking
- High level of security thanks to multiple perimeters locking
- Ease of use and high functionality, even for large spans
- Wide variety of typologies, compatible with various mechanisms
- Suitable for double and triple glazing
- Modern design
- Ideal solution for homes and buildings.
- Window type: Sliding/Lift and sliding
- Thermal insulation: Yes
- External shape: Flat

## HANDLES

The system comes with exquisitely designed branded handles, ensuring unparalleled quality and flawless performance. These handles, meticulously crafted from aluminium, offer a wide range of standard colours to choose from, allowing you to customise your system to perfection.



Ideal for heavy-duty constructions up to **300 Kg** per sash cooperating with the Lift & Slide

**Wide variety of stiffeners** for reinforcement at the interlocking position internally and/or externally, according to the wind load specs of each project.

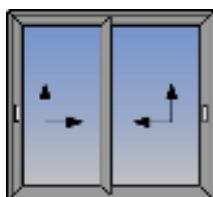


ical Characteristics

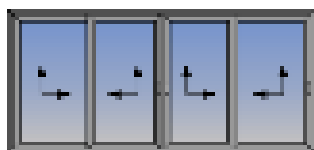
Performance

FRAME WIDTH:	136 mm	RESISTANCE TO WIND LOAD (UNI EN 12210)	Clase C5/B5
SASH WIDTH:	86/96.5 mm	WATER TIGHTNESS (UNI EN 12208)	Classe E1200
FRAME HEIGHT:	45 mm	AIR PERMEABILITY (UNI EN 12207)	Classe 4
INTYERLOCKING PROFILE: COLUMN	49/96 mm	THERMAL TRASMITTANCE Uf W/(m2K)	from 2.3
SASH WEIGHT:	up to 300 Kg	THERMAL TRASMITTANCE Uw (UNI EN ISO 10077-1)	1.84
GLAZING TYPE:	Double/Triple	BURGLAR RESISTANCE:	RC2
GLAZING THICKNESS:	22-45 mm		
THERMAL INSULATION:	Polyamides 24 & 16 Insulation foam		

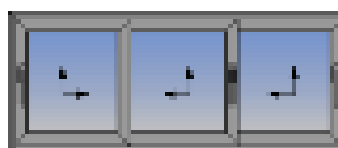
## TYOLOGIES



Double L&S sash



Four L&S sash meeting stile



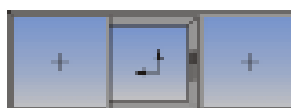
Triple L & S sash



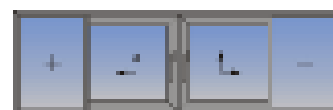
Single L&S sash with fixed



Two L&S sashes with fixed



Single L&S sash with two fixed



Double L&S sash with meeting stile & two fixed